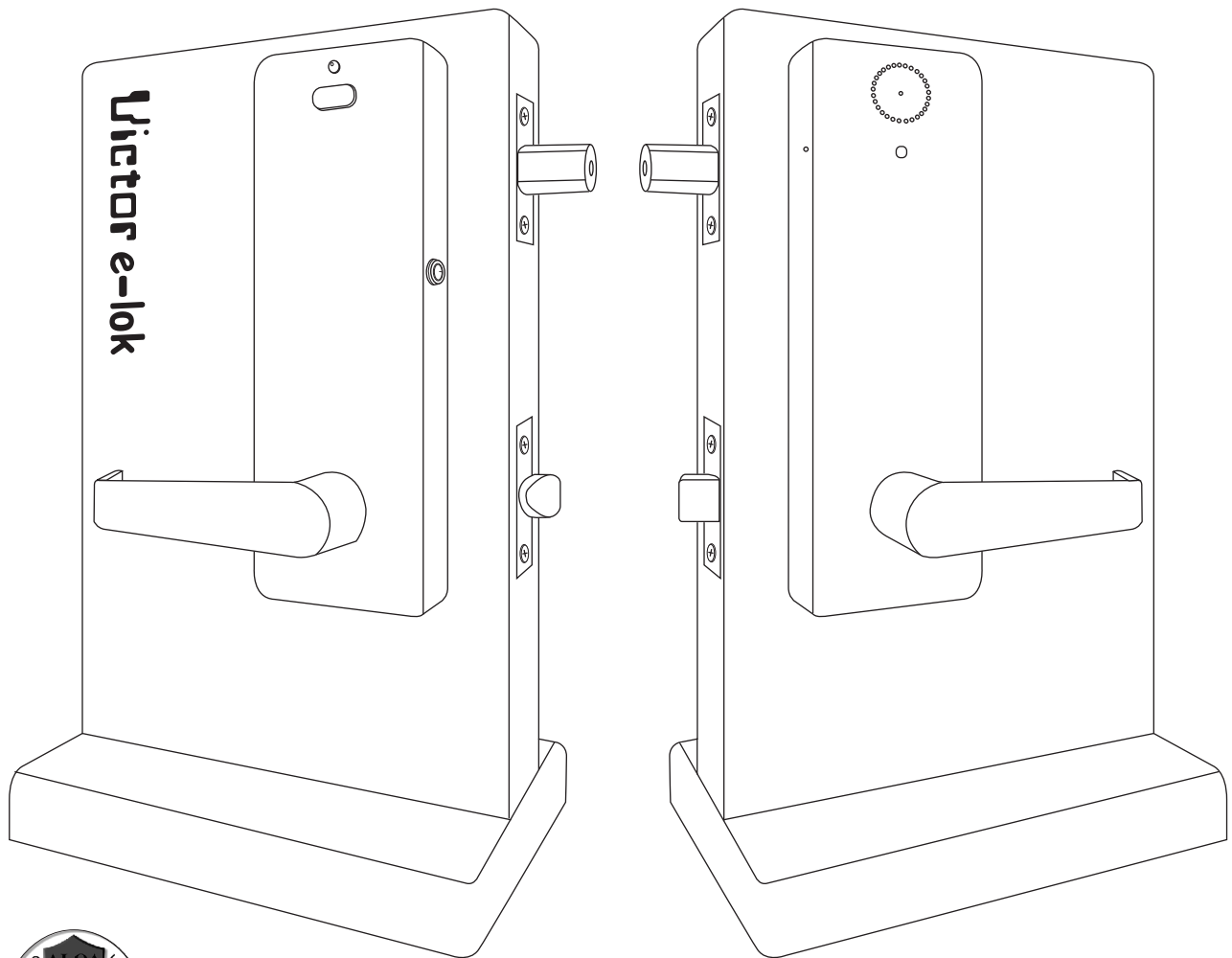


ER-043 (Interconnected Lock) Digital Infrared Remote Control Lock

Installation Instruction and User Manual



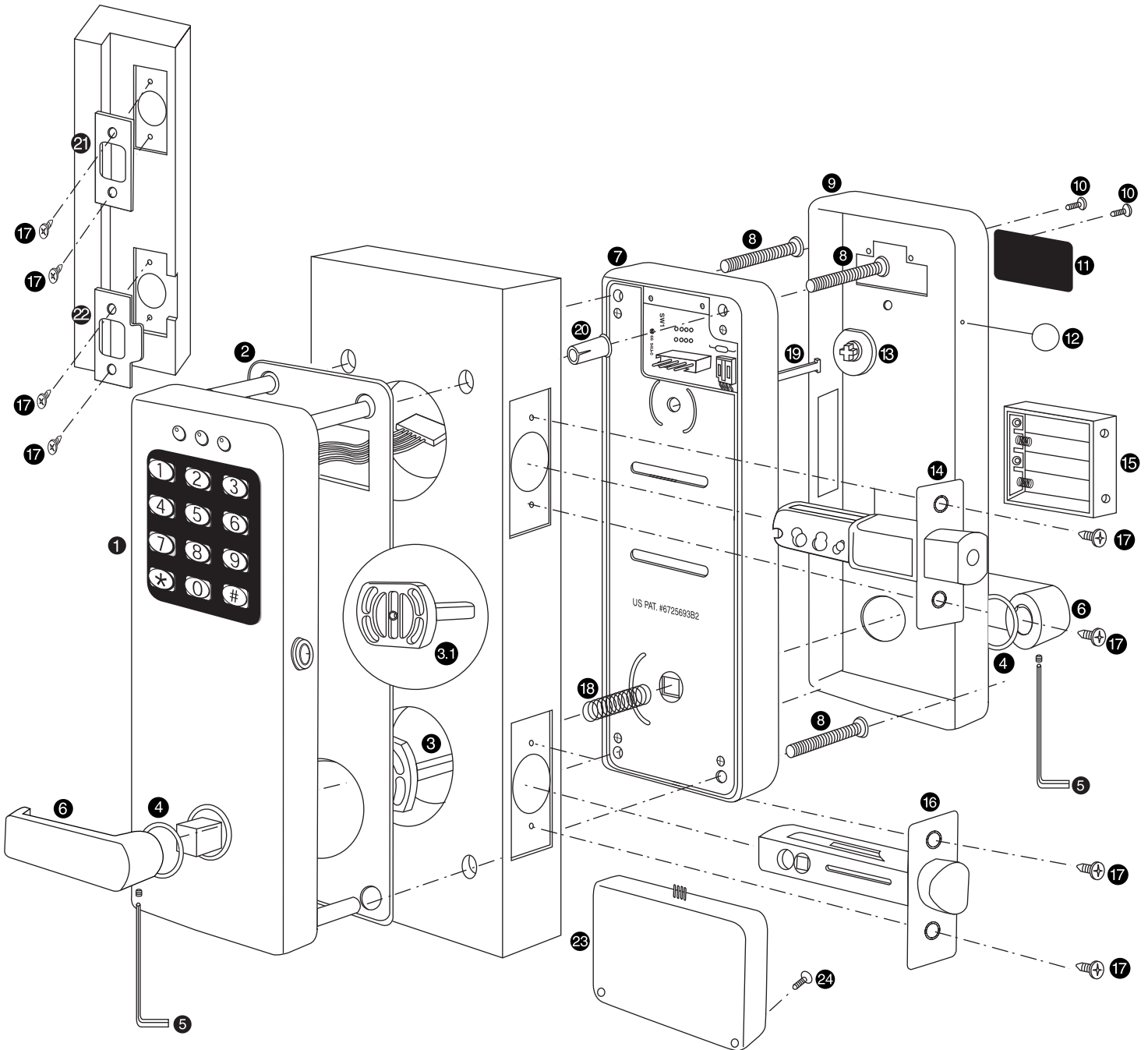
Associate Member of
ALOA

CONTENTS

PART LIST	Page 3
PREP KIT LIST	Page 4
DOOR SPECIFICATION	Page 5
STEP 1: DOOR PREPARATION FOR NEW DOOR WITHOUT HOLES	Page 6-8
STEP 1B: NEW DOOR ALREADY WITH CYLINDRICAL HOLES	Page 9
STEP 2: PREPARE PARTS BEFORE INSTALLATION	Page 10
STEP 3: SELECT BACKSET	Page 11
STEP 4: INSTALL STRIKE PLATES	Page 12
STEP 5: MOUNT DEAD BOLT AND SPRING LATCH	Page 13
STEP 6: INSTALL SPINDLE FOR THE SPRING LATCH	Page 13
STEP 7: BOLT INNER AND OUTER HOUSING TOGETHER	Page 14
STEP 8: OPERATION TESTS	Page 15
STEP 9: MOUNT INNER ESCUTCHEON PLATE	Page 16
STEP 10: FINAL OPERATION TEST	Page 16
STEP 11: CODE SETTING AND DELETING	Page 17
SPECIAL INSTRUCTIONS AND FEATURES	Page 18

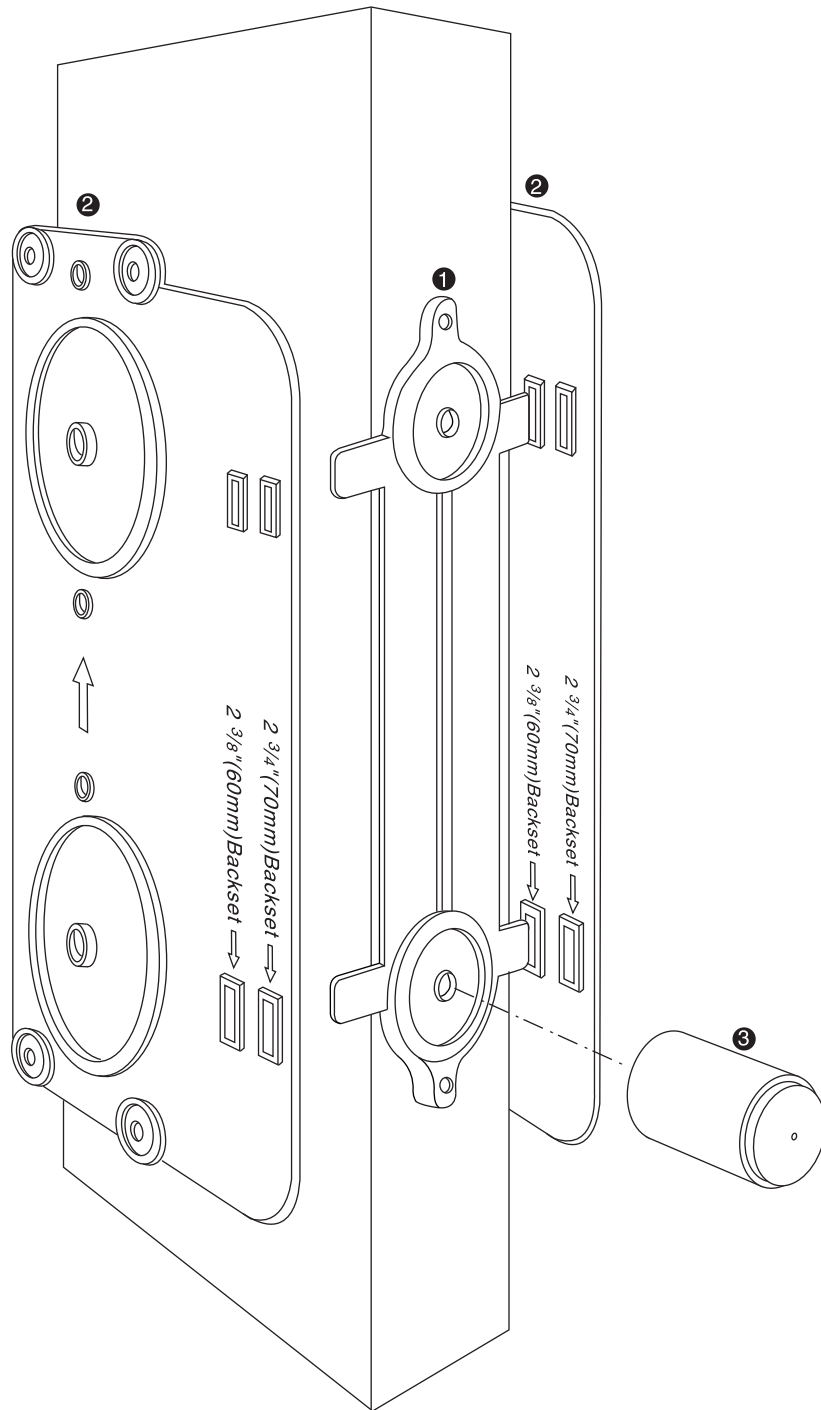
PARTS LIST

- | | | |
|---|------------------------------------|---|
| 1. Outer Housing Assembly (1 each) | 7. Inner Housing Assembly (1 each) | 16. Spring Latch (1 each) |
| 2. Water Seal (1 each) | 8. M5-0.8P Machine Screw (4 each) | 17. 4mm x 20mm Wood Screw (8 each) |
| 3. Spindle, Spring Latch / Passage Function (1 each) | 9. Inner Escutcheon (1 each) | 18. Coil Spring (1 each) |
| 3.1 Spindle, Spring Latch / Store room Function (1 each) | 10. M3-0.5P Machine Screw (2 each) | 19. Tailpiece, Dead Bolt (1 each) |
| 4. Nylon Washer (2 each) | 11. Code Cover (1 each) | 20. Plastic Snap Bushing (1 each) |
| 5. 2.5mm Allen Wrench (1 each) | 12. Push Pin (1 each) | 21. Strike Plate, Dead Bolt (1 each) |
| 6. Lever Handle with Set Screw (2 each) | 13. Indicator (1 each) | 22. Strike Plate, Spring Latch (1 each) |
| | 14. Dead Bolt (1 each) | 23. Alarm Housing (1 each) |
| | 15. Battery Housing (1 each) | 24. 3mm x15mm Wood Screw (4 each) |

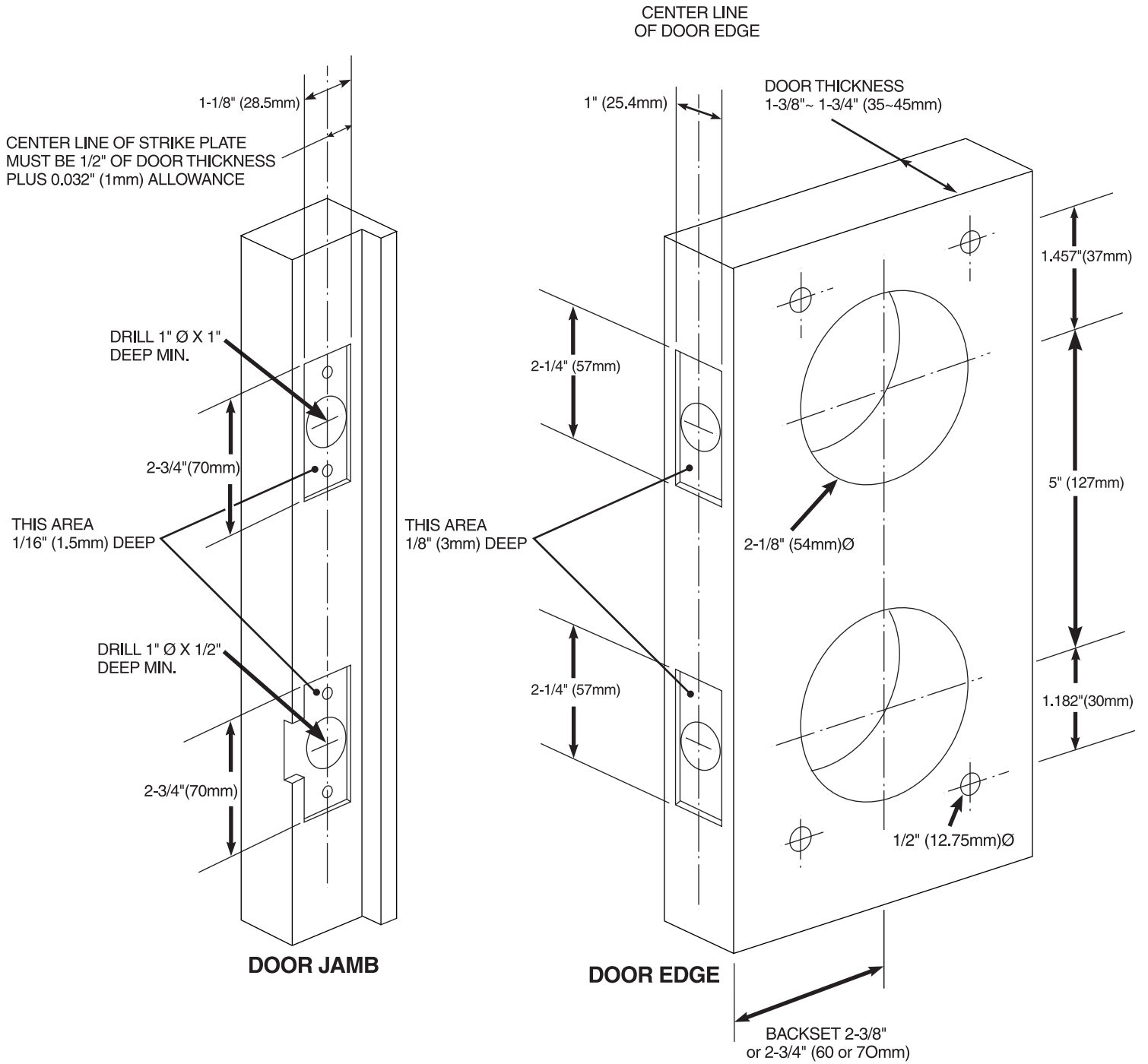


PREP KIT LIST

- 1.Edge Jig (1 each)
- 2.Side Jig (2 each)
- 3.Strike Hole Locator (1 each)



DOOR SPECIFICATION



Step 1

DOOR PREPARATION FOR NEW DOOR WITHOUT HOLES

NOTE: DO NOT USE WOOD DRILLING BITS FOR METAL DOOR.

ALWAYS DRILL FROM BOTH SIDES TO PREVENT MISALIGNMENT OR SPLINTERING

- Position Edge Jig parallel to door edge. Note: This must be done firmly to prevent shifting and tilting.
- Use 1/8" drill to drill as marked on 1~2. Secure with 4mm Wood Screws into the door (Figure 1).
- Position Side Jig according to selected backset (2-3/8" or 2-3/4"). Put on Side Jigs by inserting corresponding side apertures onto Edge Jig. Note: Arrow on door Side Jig must be pointing upwards and top aperture of Side Jig is narrower than bottom aperture.
- Use 1/8" drill for holes 3~6. Then secure the Side Jig with 4mmx20mm Wood Screws.

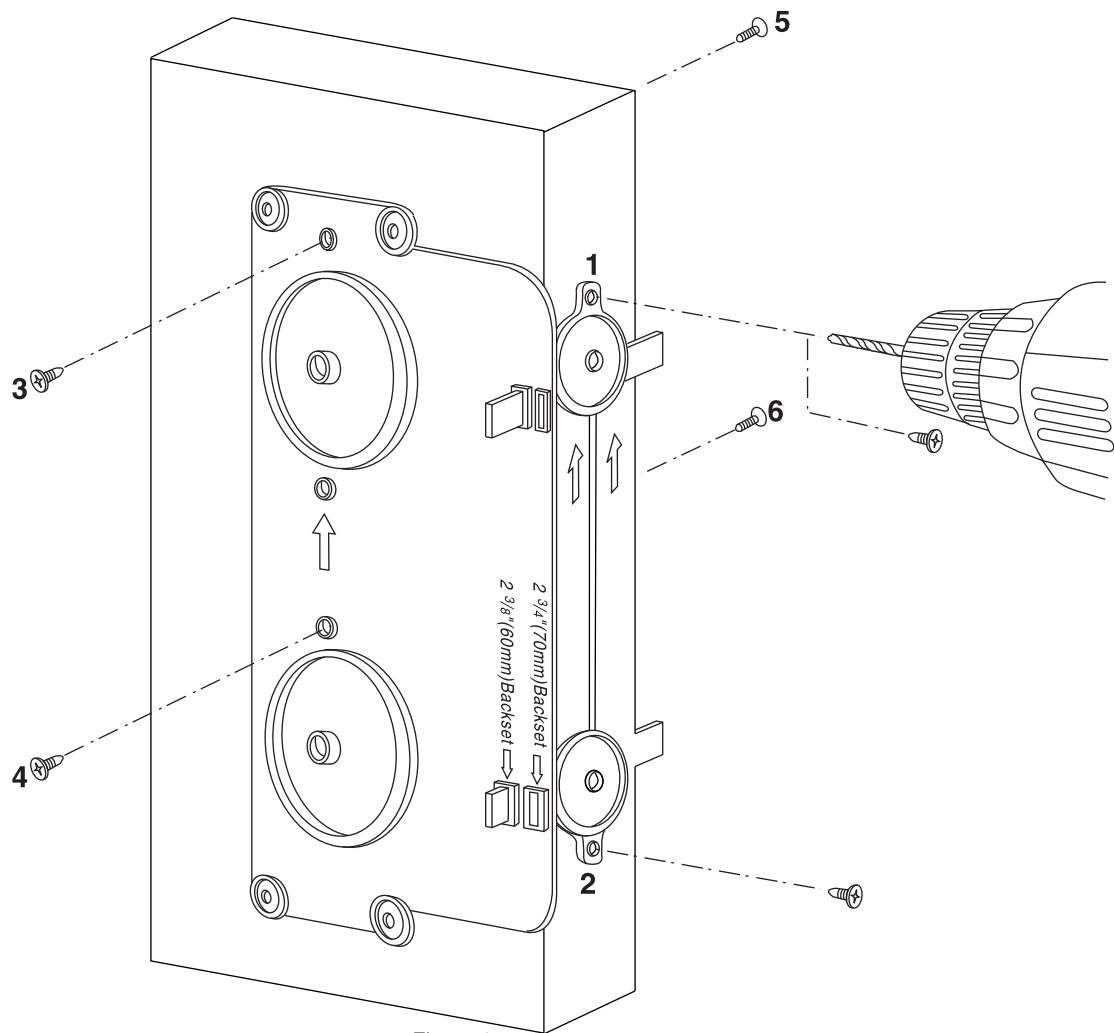


Figure 1

- e. Use 1/8" drill for holes 13~20 as a pre-drilled guide holes (Figure 2).
- f. Use 1/4" drill for holes 7~12.

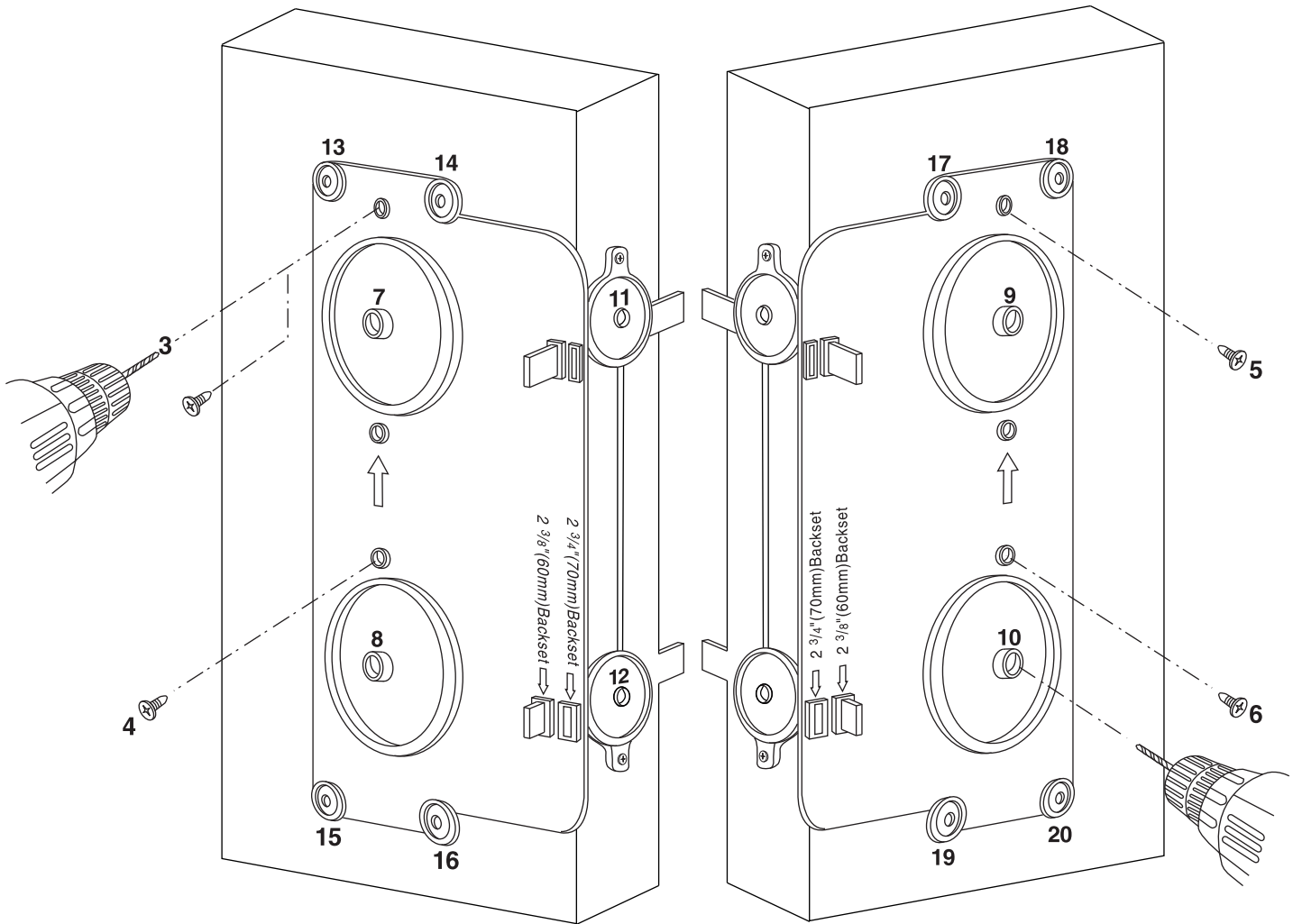


Figure 2

- g. Unscrew and remove Jigs.
- h. Use 1/2" drill for holes 13~20 (Figure 3).
- i. Use 1" hole saw for holes 11~12.
- j. Use 2-1/8" hole saw for holes 7~8.
- k. Mark Dead Bolt and Spring Latch faceplates on door edge with a pencil (Figure 4).
- l. Use a 1" chisel to chisel out drawn rectangle approximately 1/8" deep into door. Faceplate should fit relatively flat on door edge (Figure 5).

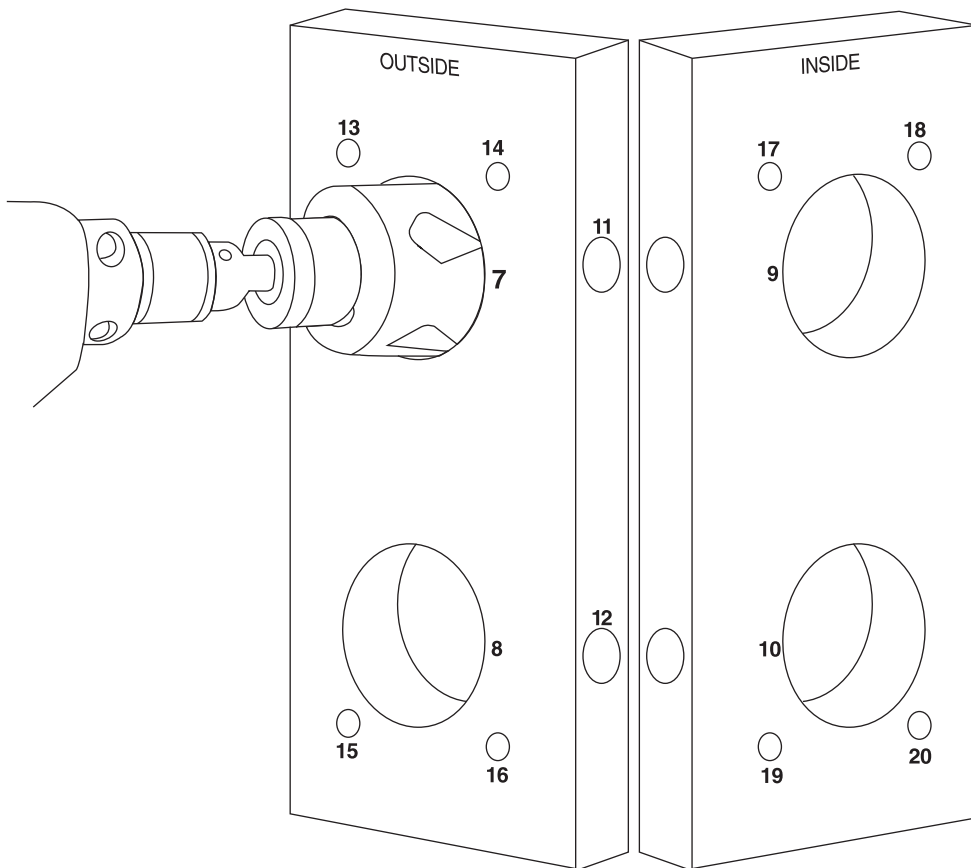


Figure 3

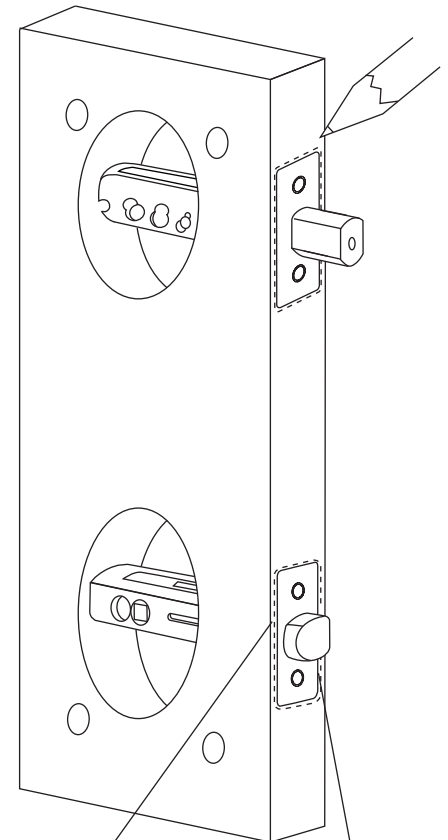


Figure 4

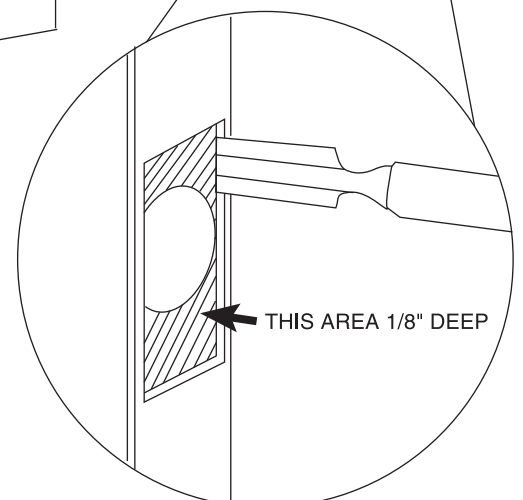


Figure 5

Step 1B

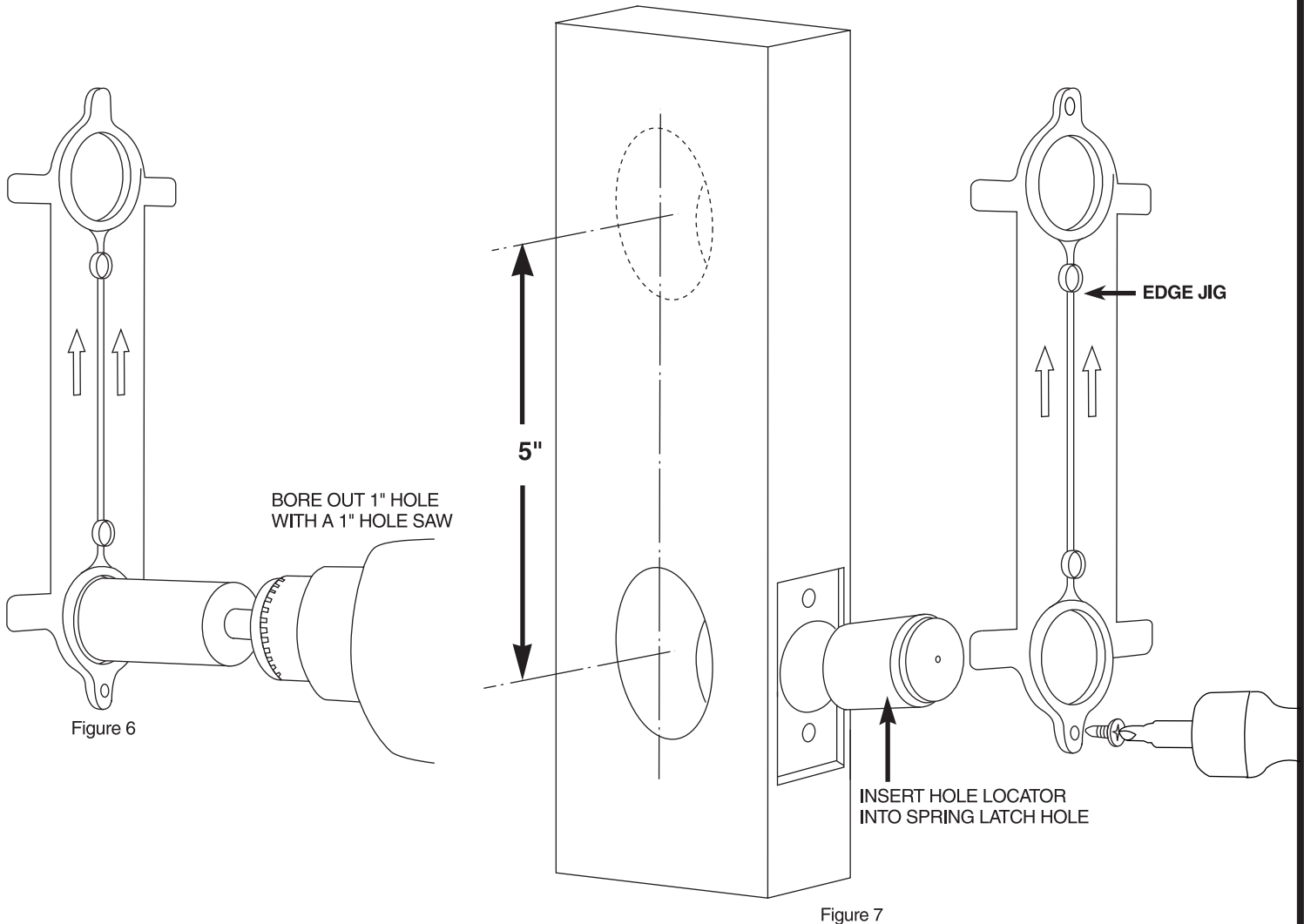
NEWS DOOR ALREADY WITH CYLINDRICAL HOLES

IF YOUR DOOR HAS ONE CYLINDRICAL HOLE

- Bore out 1" hole with a 1" hole saw on the bottom of Edge Jlg (Figure 6).
- Insert Hole Locator into Spring Latch hole. Insert bottom of Edge Jig into Hole Locator and screw in Edge Jig to door edge. Proceed with STEP 1 (Figure 7).

IF YOUR DOOR HAS TWO CYLINDRICAL HOLES

- If distance between two holes is 5" follow the same procedures as above.
- If distance is 4", 4-1/2", or 5-1/2" between cylindrical holes please purchase special Gear Box Assembly from Victor e-lok.



Step2

PREPARE THE PARTS BEFORE INSTALLTION

- Check if door is Right or Left hand. If you are facing the outside of the door and the hinge is on the right, it is a Right Hand door (and visa versa). Make sure your Kit matches your door type (Figure 8).
- Set the Rotor to correct position. R is for right hand and L is for left hand (Figure 9).
- Unscrew 2.0mm Machine Screws on both upper sides of Inner Escutcheon and remove Escutcheon.
- Insert Push Pin into pinhole on left side of Inner Escutcheon then depress to release and remove Battery Housing (Figure 10).

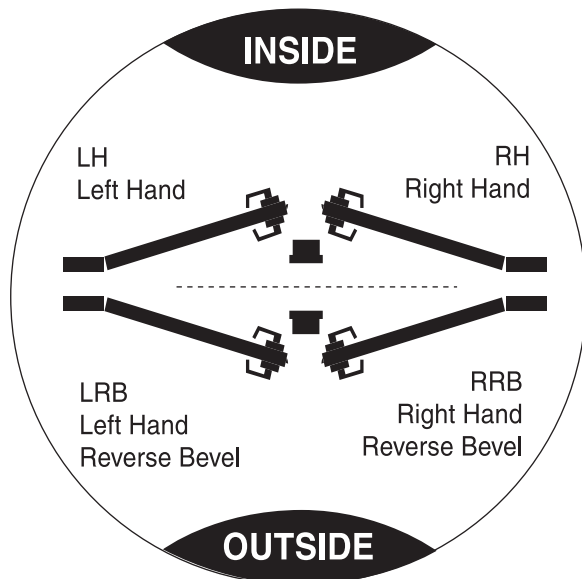


Figure 8

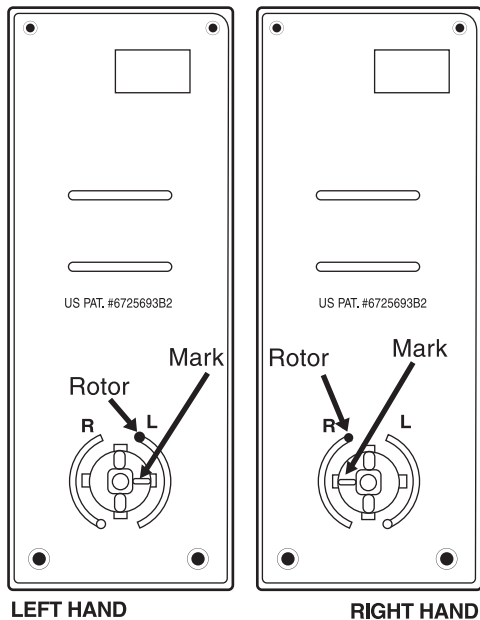


Figure 9

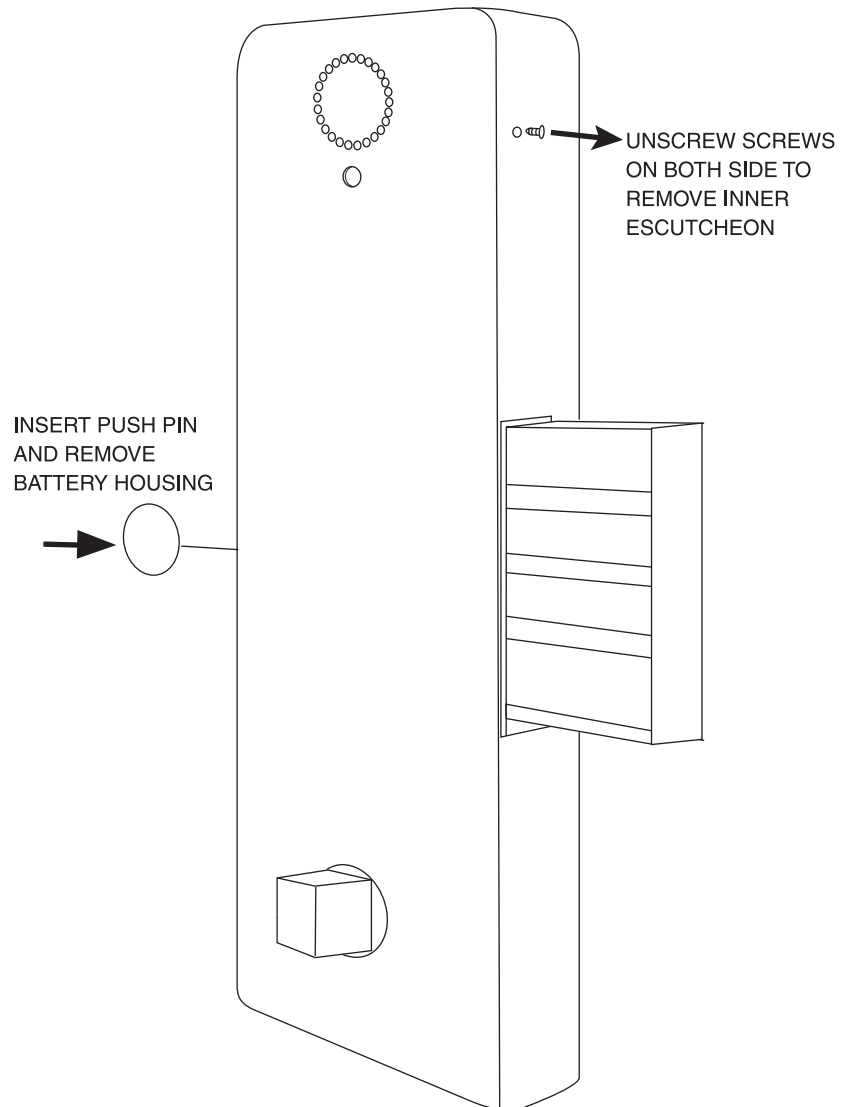


Figure 10

Step 3

SELECT BACKSET

- a. Factory default set up is 2-3/8". To change to 2-3/4" both Dead Bolt and Spring Latch must be modified. Dead Bolt must be at the retracted position, then lift button up and push mechanism all the way to the right (Figure 11).

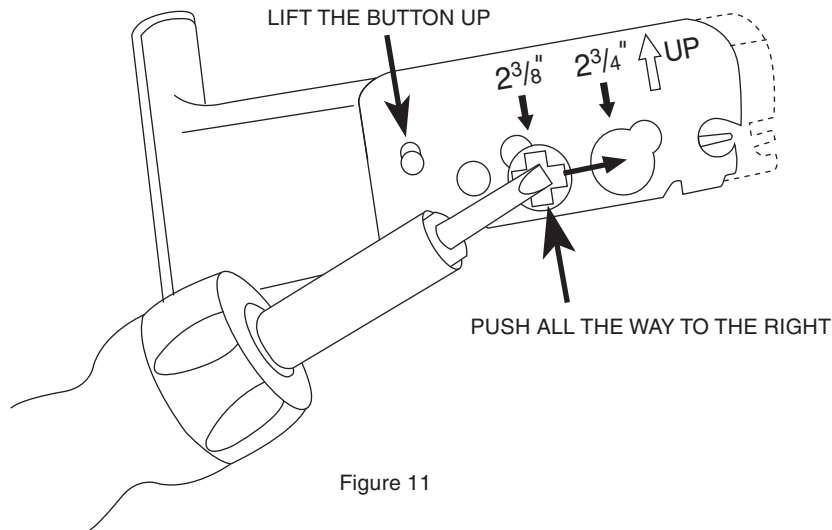


Figure 11

- b. To change Spring Latch backset from 2-3/8" to 2-3/4" remove two round head screws and carefully turn over the backset. Remove cover and move hub and connector to the back hole at 2-3/4" position. Put cover back and tighten screws (Figure 12,13,14).

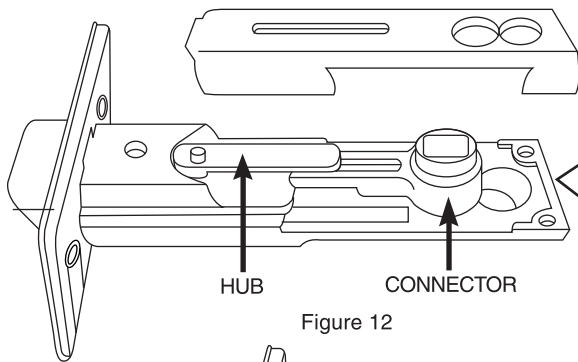


Figure 12

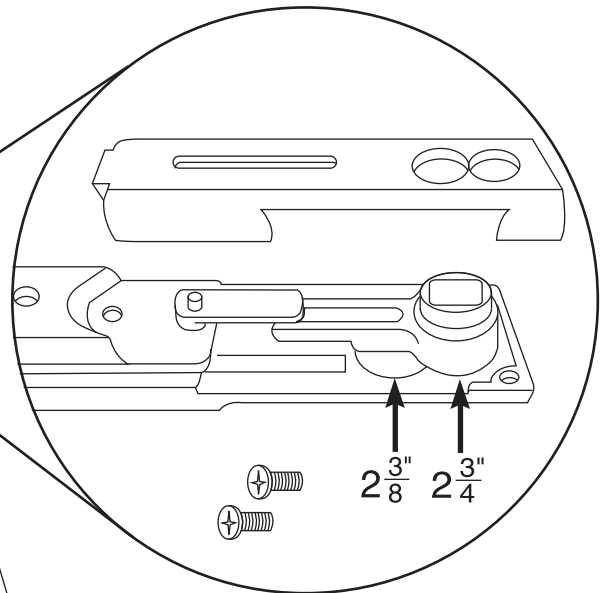


Figure 13

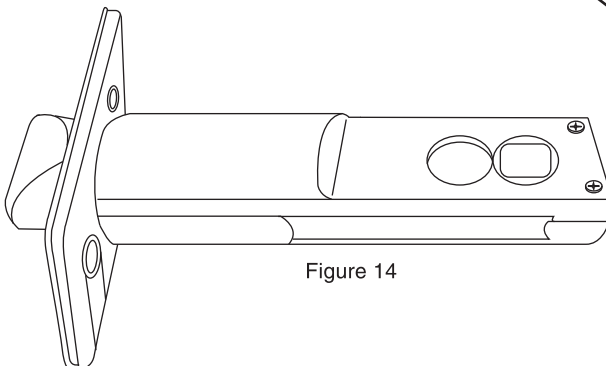
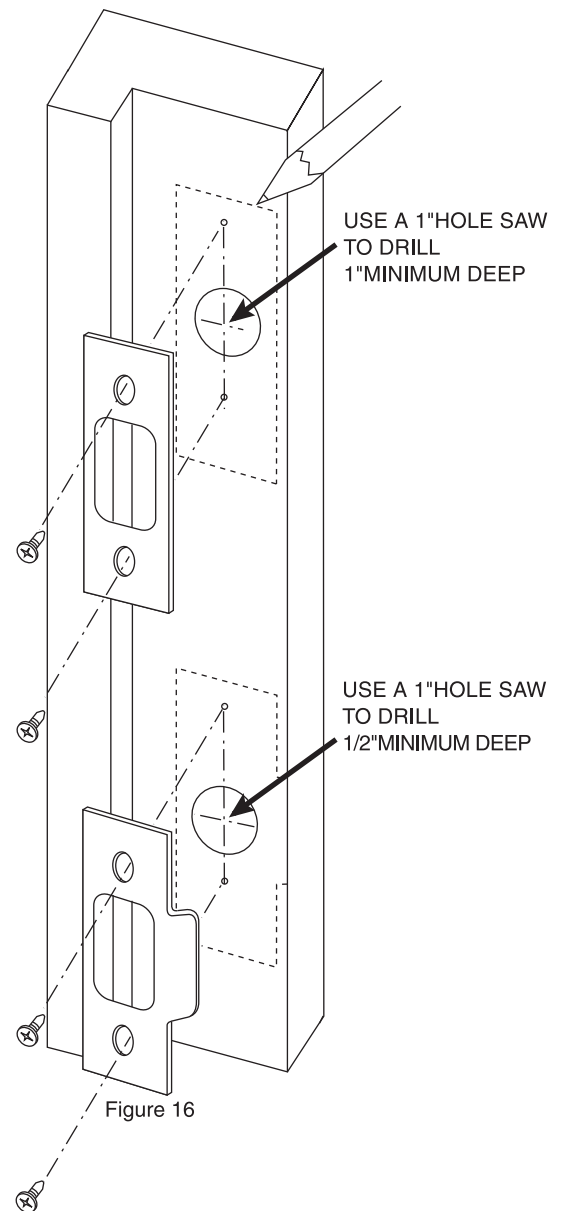
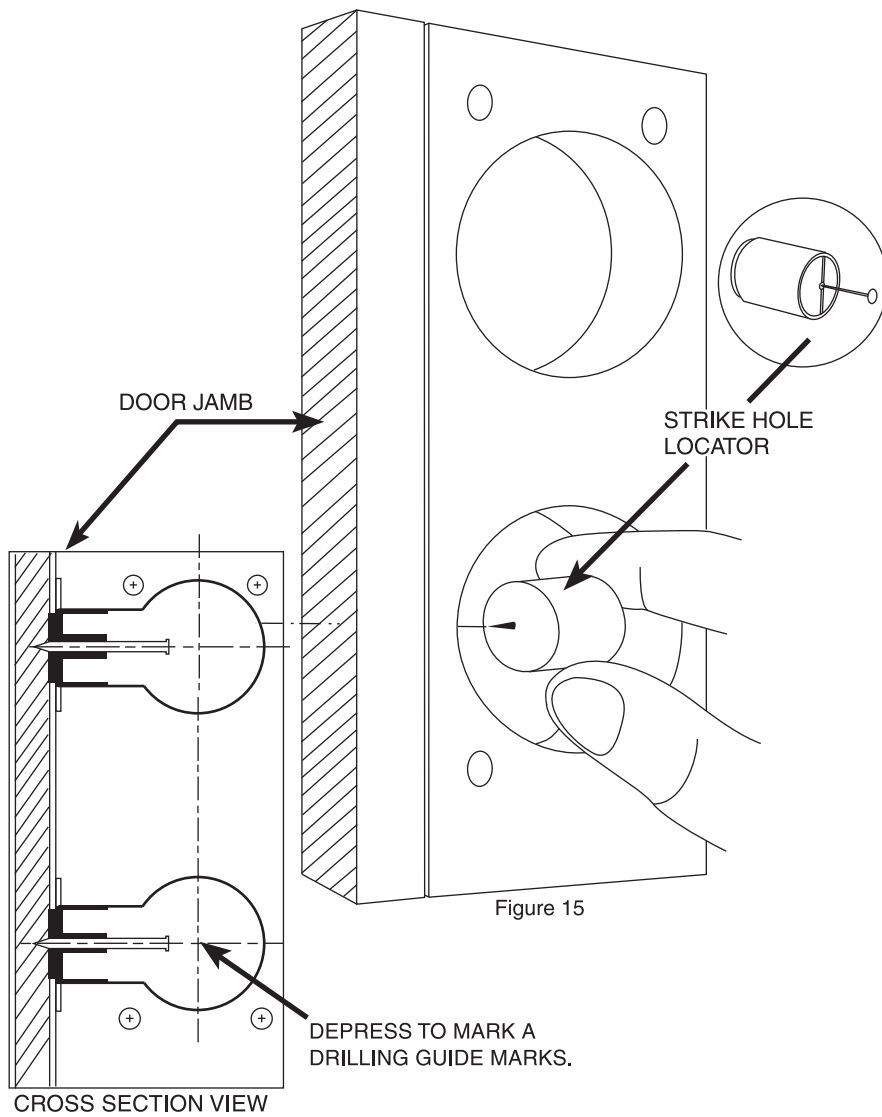


Figure 14

Step 4

INSTALL STRIKE PLATES

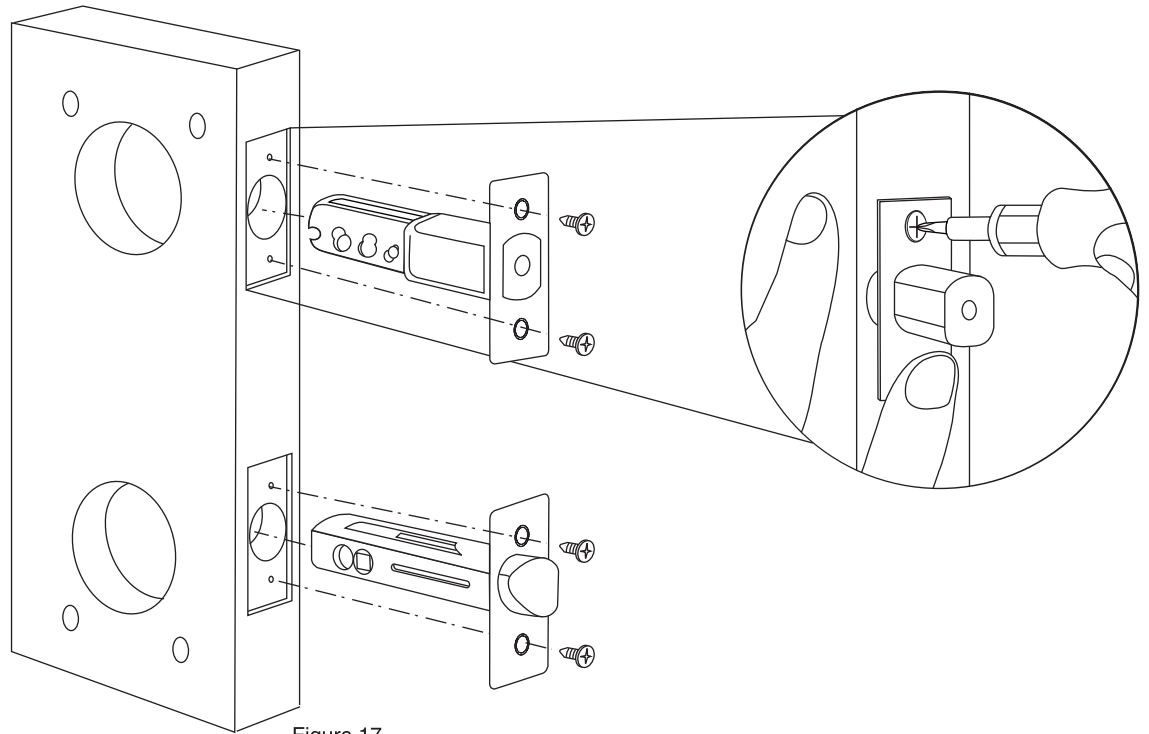
- Insert a nail through Strike Hole Locator and insert Strike Hole Locator into Latch Bolt hole. Use appropriate tool to press nail into door jamb and puncture a drilling point. Repeat on Dead Bolt hole (Figure15).
- Use 1/8" drill to drill guide holes on marks.
- Proceed to drill 1" holes; 1/2" minimum depth for Spring Latch, 1" minimum depth for Dead Bolt (Figure16).
- Mark both Strike Plates on door jamb with a pencil (Figure16).
- Chisel out drawn rectangles approximately 1/16" deep into door jamb.
- Mount Strike Plates with 4mm Wood Screws relatively flat on door jamb (Figure16).



Step 5

MOUNT DEAD BOLT AND SPRING LATCH

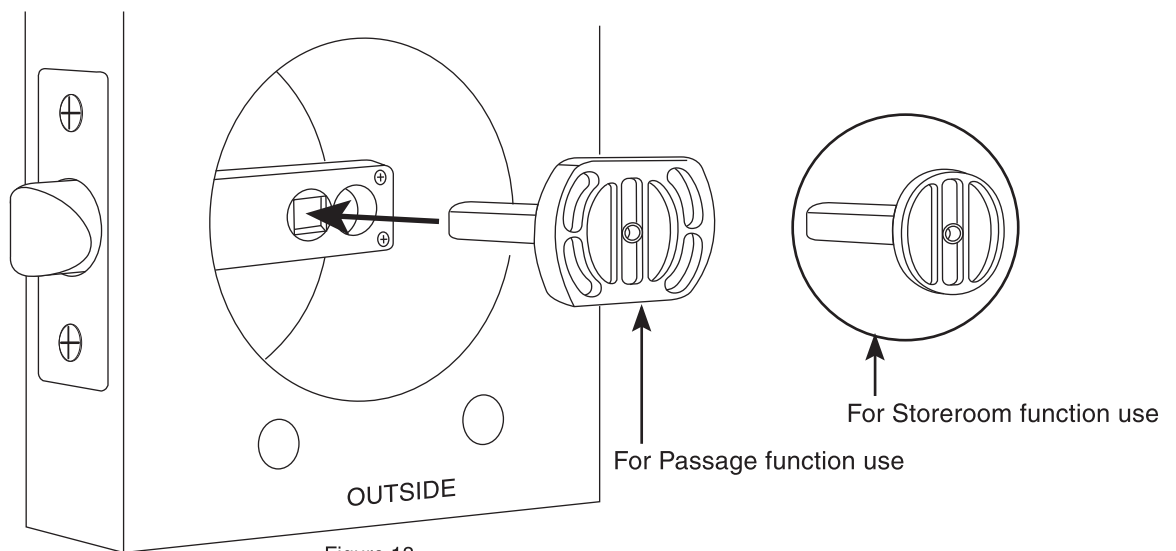
- a. Insert Dead Bolt and Spring Latch into bored holes (Figure 17).
- b. Loosely mount Dead Bolt and Spring Latch with 4mmx20mm Wood Screws. Test both Dead Bolt and Spring Latch to confirm they work smoothly. Tighten screws.



Step 6

INSTALL SPINDLE FOR SPRING LATCH

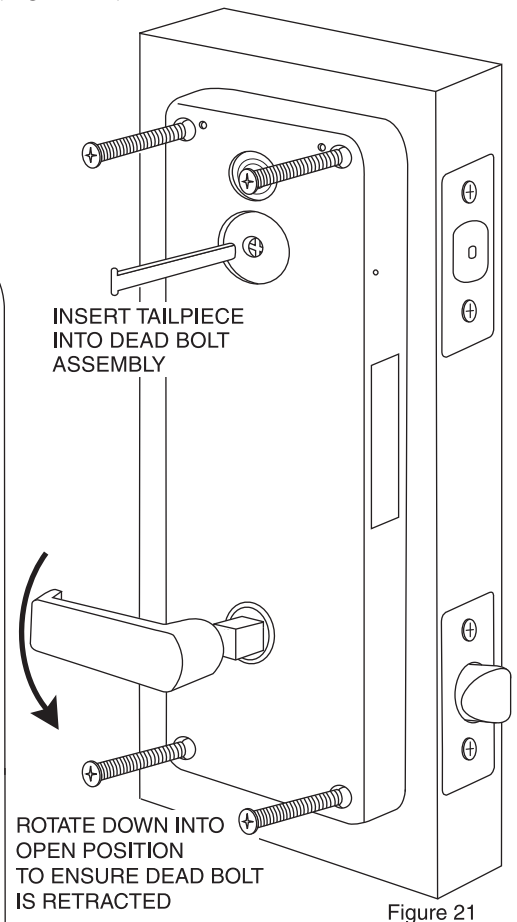
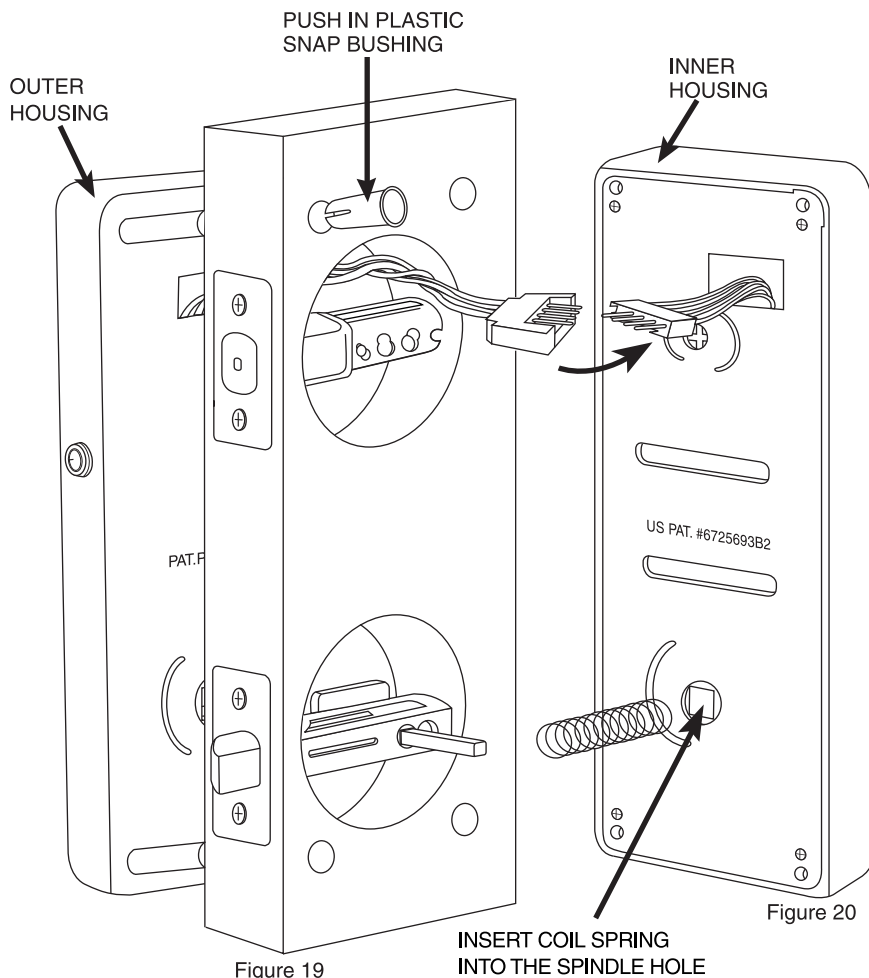
Insert Spindle from outside of door to the Spring Latch hole. Flat sides must be parallel to ground (Figure 18).



Step 7

BOLT INNER AND OUTER HOUSING TOGETHER

- Mount Outer Housing into pre-drilled holes. Tuck harness above Dead Bolt Assembly (Figure 19).
- Push Plastic Snap Bushing into upper left post all the way in to secure Outer Housing onto door (Figure 19).
- Twist wire harness twice so it curves up (to prevent dead bolt movement from scratching it). Plug wire harness into connector in Inner Housing Assembly (Figure 19).
- Insert Coil Spring into Spindle hole. Connect both Housings together by inserting Spindle into spindle hole. Then screw in both Housing Assemblies with four M5-0.8P Machine Screws. **DO NOT TIGHTEN** at this time. Note: Hold both Housings together when screwing in to Assemble correctly (Figure 20).
- Make sure Dead Bolt is in retracted position. Insert Inner Lever Handle into Inner Housing and rotate down into open position. This is to synchronize Dead Bolt and mechanism (Figure 21).
- Insert Dead Bolt Tailpiece into Dead Bolt Assembly. If Tailpiece is difficult to insert, **DO NOT FORCE** into the cam cross. Adjust position of Housing until Tailpiece can be inserted easily. **GENTLY** rotate Lever Handle up and down to confirm Dead Bolt can be locked and retracted smoothly. Tighten screws (Figure 21).



Step 8

OPERATION TESTS

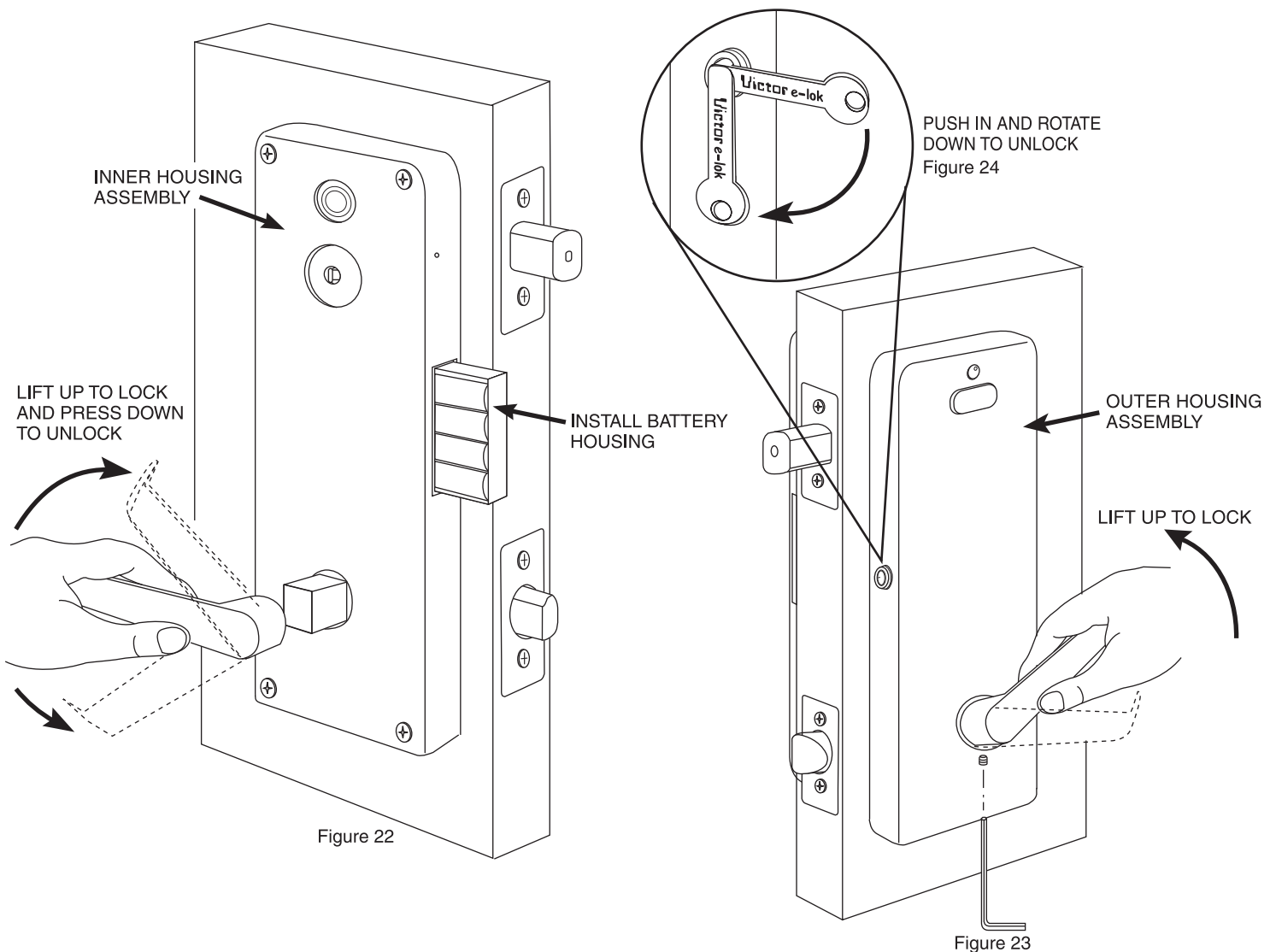
GENERAL OPERATION TEST

- Install Battery Housing. Place Nylon Washer followed by Lever Handle on Outer Housing Assembly and tighten set screws with Allen Wrench. Lift inner Lever Handle up to lock Dead Bolt and press down to unlock (Figure 22).
- Lift outer Lever Handle up to lock. Rotate Lever Handle down to unlock and confirm opening function operates correctly (Figure 23).

EMERGENCY KEY TEST

Note: Emergency Key is for backup in case of electronic failure. Do not use as override key.

- Set lock in locked position. Confirm it cannot be opened from outside (Figure 23).
- Insert Emergency Key horizontally into hole of cam lock. Push in the Emergency Key into hole then rotate down to unlock (Figure 24).
- Rotate down outer Lever Handle to open. Remove inner Lever Handle if test is successful.



Step 9

MOUNT INNER ESCUTCHEON PLATE

- a. Make sure Dead Bolt is in retracted position. Insert Indicator so arrows are vertical.
- b. Mount Inner Escutcheon on inner Housing Assembly. Tighten with two 2mm Machine Screws on both upper sides of Inner Escutcheon.
- c. Insert Nylon Washer and Lever Handle into square shaft. Insert Set Screw into Lever Handle and tighten with Allen Wrench (Figure 25).

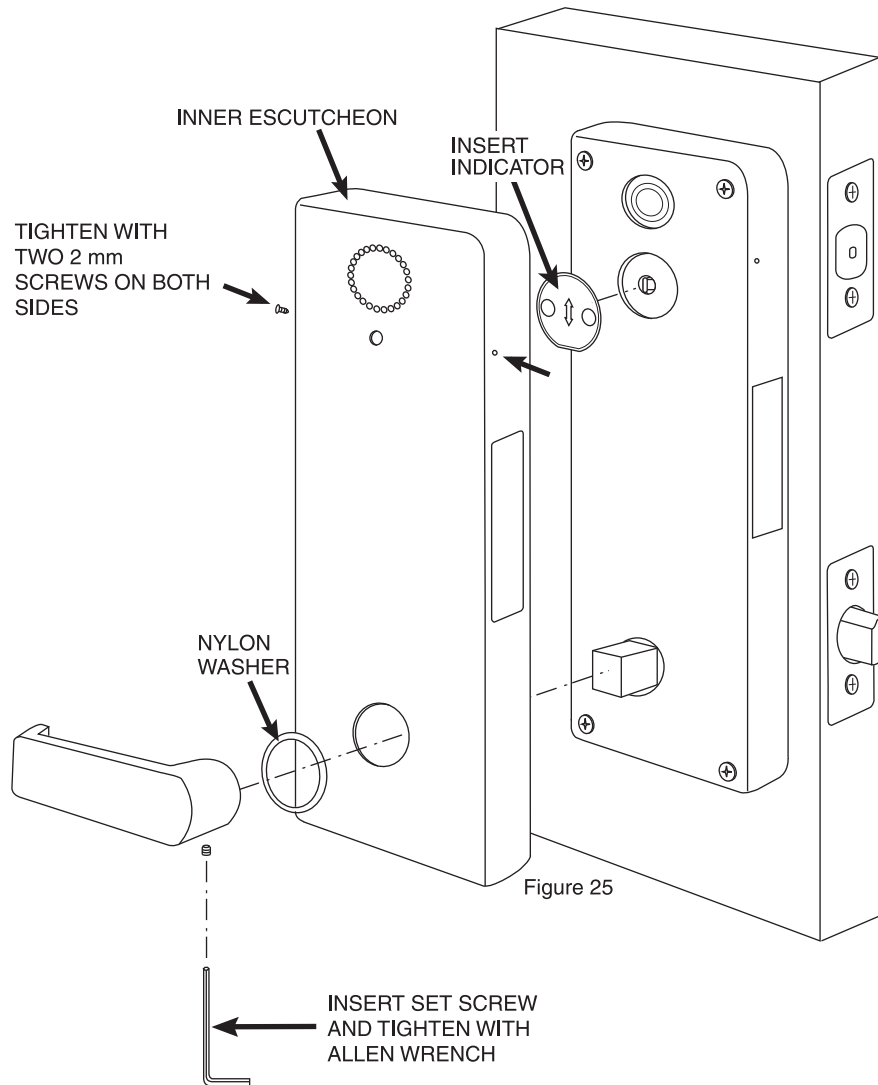


Figure 25

Step 10

FINAL OPERATION TEST

- a. Close the door and confirm Spring Latch is in latched position.
- b. Lift Lever Handle from inside to lock Dead Bolt. Confirm door cannot be opened from outside.
- c. Lift Lever Handle from outside to lock. Confirm it is locked by pressing lever down.

Step 11

CODE SETTING AND DELETING

REMOTE CONTROLLER CODE SETTING PROCEDURES

- a. Insert Push Pin into upper right side of Inner Housing Assembly for 1 second until green light start blinking.
- b. Point Controller toward infrared window and press until green is sold. If Red Light glows, teaching is not successful.

REMOTE CONTROLLER CODE DELETION PROCEDURE

- a. Insert Push Pin into upper right side of Inner Housing Assembly for 5 second, green light glows for 2 second, all codes are deleted.

SPECIAL INSTRUCTIONS AND FEATURES

1. **WHEN LOCKING DOOR, LIFT LEVER HANDLE ALL THE WAY UP.** If Lever Handle is only lifted partially, door may not lock.
2. Egress exit by pressing down Lever Handle.
3. Emergency Key is used in case of battery or electronic failure. Key hole (cam lock) is located near door jamb to protect from picking.
4. Burglar Alarm will sound for ten seconds at six second intervals for two minutes.

5. LIGHT LEGEND

Green Light : Access Code Accepted
Orange Light : Low Battery

6. Replace batteries every two years even if orange light does not glow.
8. Do not use chemicals or abrasive materials to clean lock.
9. Do not slam the door or allow a strong wind to close the door. These actions will cause damage to the electronics of the lock.